

PENNSYLVANIA COMPENSATION RATING BUREAU

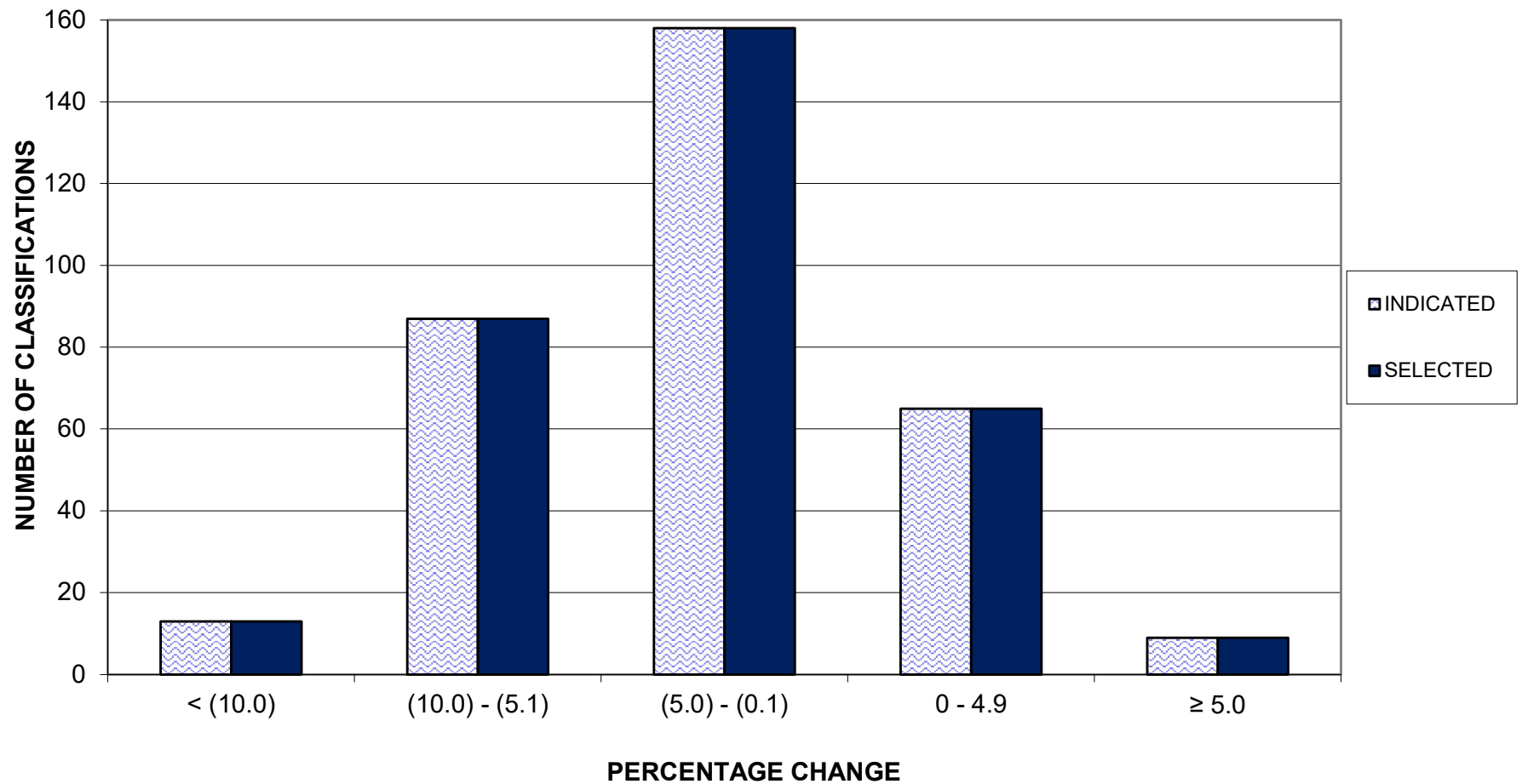
Distribution of Loss Cost % Changes

These percent changes are based on pre-surcharge loss costs.

This exhibit includes percent changes for both the direct employment classes and the temporary staffing classes.

**PENNSYLVANIA COMPENSATION RATING BUREAU**

**April 1, 2026 LOSS COST FILING  
DISTRIBUTION OF LOSS COST PERCENTAGE CHANGES (PRE-SURCHARGE)  
DIRECT EMPLOYMENT CLASSES**



**PENNSYLVANIA COMPENSATION RATING BUREAU**

**April 1, 2026 LOSS COST FILING  
DISTRIBUTION OF LOSS COST PERCENTAGE CHANGES (PRE-SURCHARGE)  
TEMPORARY STAFFING CLASSES**

